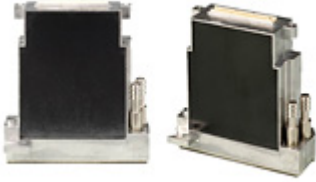


Konica KM512 Series



The compact, high resolution printheads feature 512 Nozzles spaced at 360 Nozzles per inch.

Features

Industrial Inkjet Print Head best-suited for Versatile Applications Shear mode, Piezo On-Demand Print Head

Piezo on-demand inkjet ejects ink drops utilizing deformation of small ink chambers composed of piezoelectric material, by applying electric field in accordance with signals. The principle of shear mode piezo actuation with shared wall structure allows lower power consumption as well as a high-density nozzle array.

512 Nozzle with 360 dpi Spacing

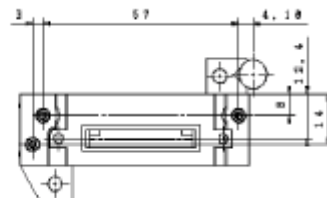
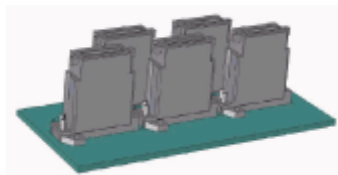
High resolution, 360 nozzle per inch spacing has enabled arranging 512 Nozzle on a compactly designed print head. The KM512 series consists of type L, M and S, corresponding to unit drop volume capabilities of 42pl, 14pl and 4pl respectively. The type M and S can be driven in 4 level grey-scale mode for reproducing high quality images with smoother tones.

Compatible with Solvent, UV, Oil ...

Due to its specially designed internal structure, the KM512 series boasts a wide range of ink compatibility, including aggressive solvent inks typically used for super-wide format printers. Inks which have high viscosity at room temperature, such as UV ink, can be heated up to 55 degrees Celsius with the H type's internal heater.

Enabling Compact Design of Head Mount System

This series is specially designed to have a "wing" structure so that users can precisely align the print heads without difficulty. This feature allows easy combination of page-width printhead units for the purpose of single-pass high-speed printing. The same external design allows interchangeability of different type heads on the same mount system.



Specifications



Product Name	KM512L	KM512M	KM512S
Drive Mode	Piezo Drop-On-Demand		
Nozzle Resolution	180dpi×2 rows = 360dpi		
Nozzle Number	256 nozzles×2 rows = 512		
Nozzle Spacing	70.5µm =(141µm 2 rows)		
Drop Volume	42pl	14pl	4pl
Firing Frequency	7.6kHz	12.8kHz	23.0kHz
Print Width	36.1mm		
Dimensions	67mmW×40mmD×72mmH		
Solvent Ink	OK	OK	OK
UV Ink	OK	OK	OK
Oil Ink	OK	OK	OK
Max. Drops in Greyscale	—	3 drops	7 drops
With Heater (H)	Available	Available	Available
Without Heater (N)	Available	Available	N.A.

Above attributes may be changed without notice.

Contact KM staff before ordering S type.

Applications

Outdoor Signage



Outdoor signage is one of the most promising markets for industrial inkjet printing.

With the capability to print on various substrates at high productivity, large format inkjet printers have been continuously replacing the analogue screen processes.

Indoor Graphics



The large format inkjet printers are also widely utilized for reproduction of high quality indoor graphics used in restaurants and shopping moles.

Super fine ink droplets have enabled reproduction of photo grade images on a variety of substrates.

Label Printing



Demand for high speed, commercial label printing of variable data such as barcodes and individual addresses is ever increasing.

Inkjet technology is best suited to provide solutions to the label industry.

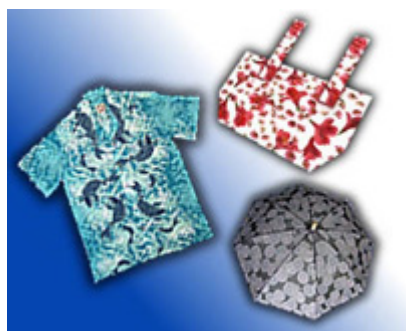
Material Deposition



Not limited to printing applications, the inkjet technology is expanding its usage to other fields such as LCD color filter manufacturing and circuit patterning.

Konica Minolta IJ provides solutions to electronic device manufacturing industry with its renowned precise dot placement technology.

Textile Printing



Introduction of inkjet has dramatically simplified the workflow of analogue textile printing by eliminating laborous plate making processes.

Digital inkjet textile printing, which can reproduce rich colors and delicate tones with high productivity, has been attracting attention in this industry as well.